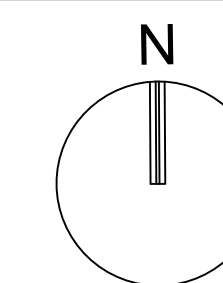


301 East Atlantic Blvd.
Pompano Beach, FL 33060
PH: (954) 788-3400

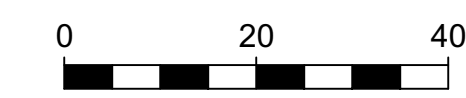
Florida Engineering Business License: CA7928
Florida Surveyor and Mapper Business License: LB6860
Florida Landscape Architecture Business License: LC26000457

[illegible]

DATE:	12/21/2011
DRAWN BY:	ZH
CHECKED BY:	DAS
FIELD BOOK:	996



GRAPHIC SCALE



SCALE: 1" = 20 '

NOTE: PRINTED DRAWING SIZE
MAY HAVE CHANGED FROM
ORIGINAL. VERIFY SCALE USING
BAR SCALE ABOVE.

1801 N. ANDREWS
AVENUE

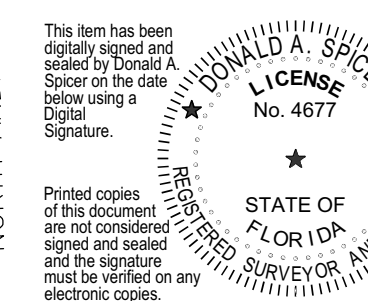
A PORTION OF PARCEL "D",
"ADDITION TO COPANS
INDUSTRIAL COMPLEX NO. 1"
P.B. 111, PG. 22, B.C.R.

CITY OF POMPANO BEACH,
BROWARD COUNTY, FLORIDA

SHEET TITLE

BOUNDARY &
TOPOGRAPHIC
SURVEY

Digitally signed
by DONALD A
SPICER
Date:
2023.01.23
09:27:51-05'00'



SHEET SHEET 2 OF 3

PROJECT NUMBER	12866.01
-------------------	----------

Plotted by: dspicer On 1/17/2023 9:49 AM

Drawing name: T:\12866.01 - 1801 N Andrews - Next Phase - First Industrial\Survey\DWG\12866.01_BTS.dwg